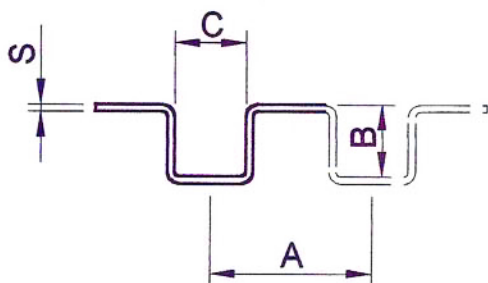
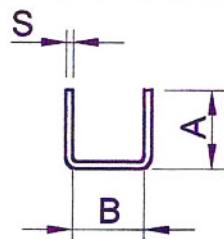


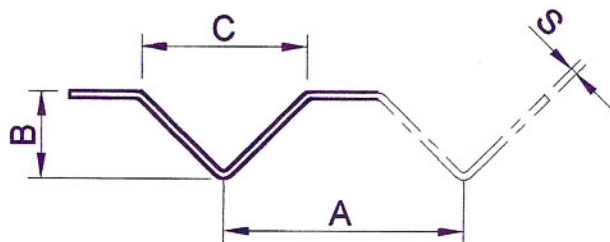
$V_{(mm)}$	6	6	6	8	8	10
$S_{(mm)}$	0,6	0,8	1	1,2	1,5	2
$F_{(ton/m)}$	9	12	15	17	24	42
$F_{(ton/m)}$	23	32	35	46	46	50

$$F = S \times 0,46 \times R$$

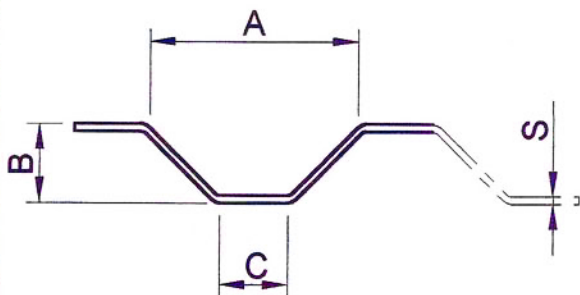


$$F = S \times 0,92 \times R$$

$$F = S \times 0,57 \times R$$



$$F = S \times 0,76 \times R$$



$$F = S \times 0,46 \times R$$

